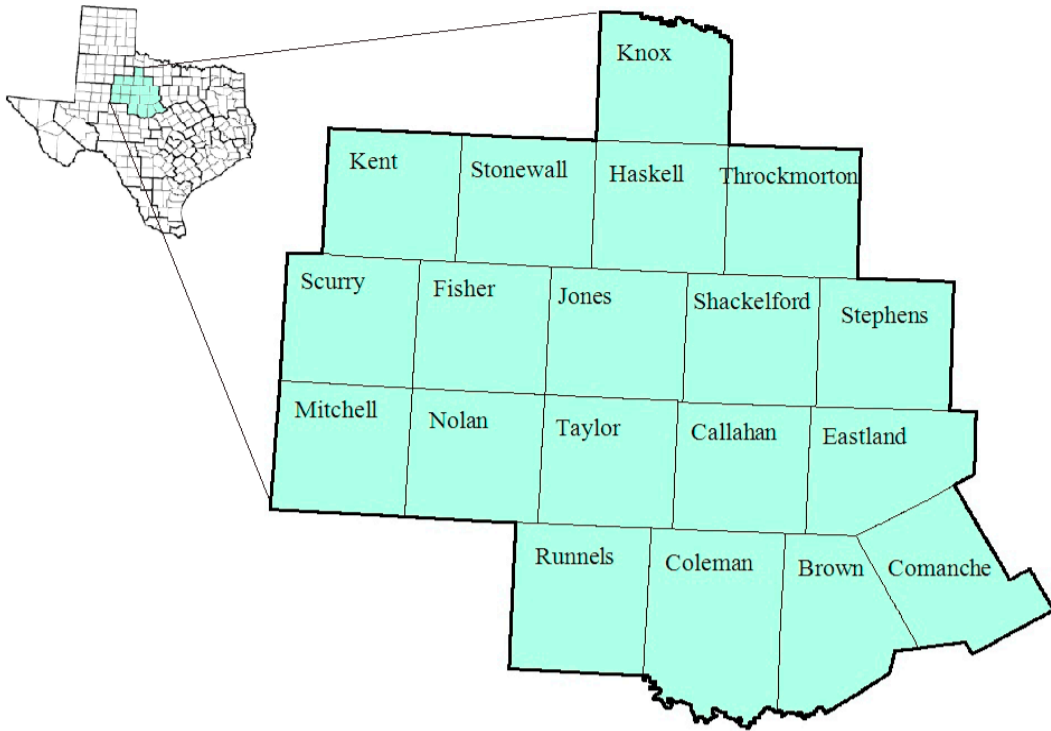


# West Central Texas Workforce Development Area

## September 2016



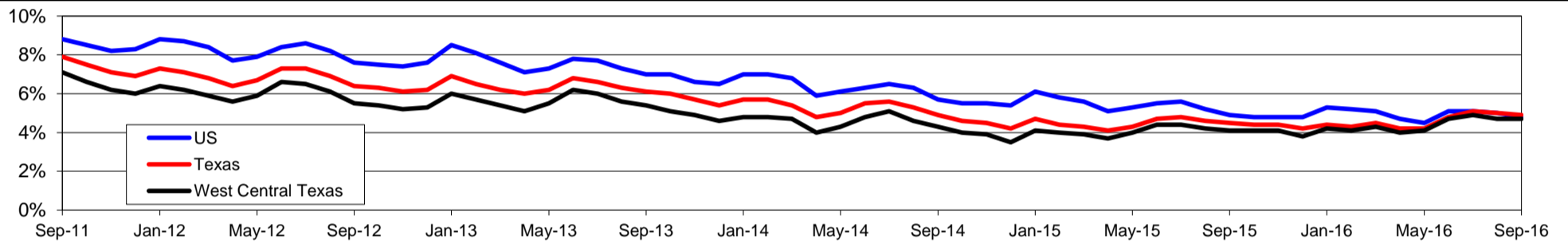
WDA Labor Force Statistics				
	Sep-16	Aug-16	Sep-15	OTY
CLF	143,752	143,145	143,412	340
Employed	137,036	136,388	137,467	-431
Unemployed	6,716	6,757	5,945	771
Rate	4.7%	4.7%	4.1%	0.6%

Texas Labor Force Statistics				
	Sep-16	Aug-16	Sep-15	OTY
CLF	13,416,799	13,378,431	13,067,230	349,569
Employed	12,754,685	12,709,461	12,480,453	274,232
Unemployed	662,114	668,970	586,777	75,337
Rate	4.9%	5.0%	4.5%	0.4%

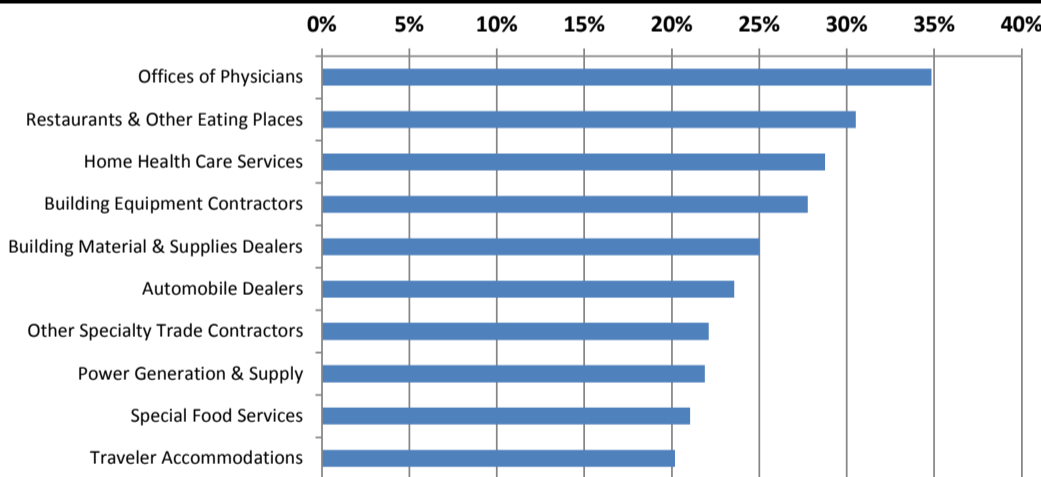
US Labor Force Statistics				
	Sep-16	Aug-16	Sep-15	OTY
CLF	159,636,000	159,800,000	156,607,000	3,029,000
Employed	151,977,000	151,804,000	148,980,000	2,997,000
Unemployed	7,658,000	7,996,000	7,628,000	30,000
Rate	4.8%	5.0%	4.9%	-0.1%

Continued Claims for the Week of the 12th				
	Sep-16	Aug-16	Sep-15	OTY
WDA	1,002	1,128	1,081	-79
Texas	132,202	148,897	134,736	-2,534

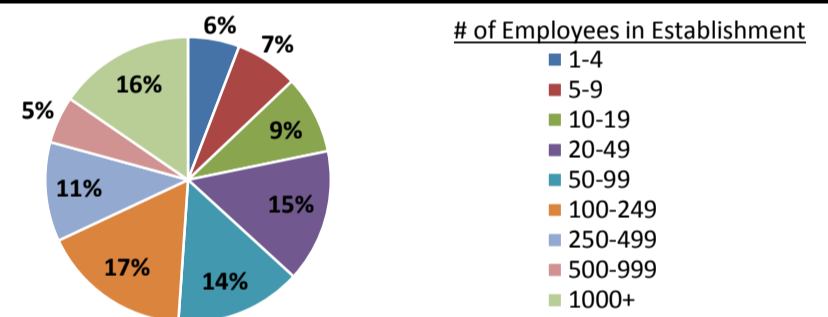
### Historical Unemployment Rates



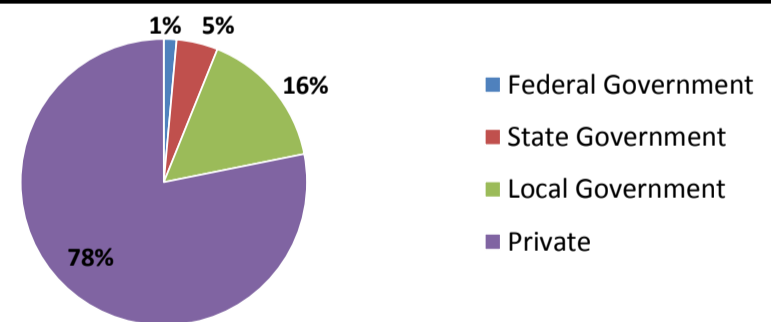
### Projected Fastest Growing Industries in WDA (% growth 2014-2024)



### Employment by Size Class (1st Quarter 2016)



### Employment by Ownership (1st Quarter 2016)



### Average Weekly Wage (1st Quarter 2016)

	Q1 2016	Q4 2015	Q1 2015	Change	
				Quarter	Year
WDA	\$718	\$789	\$739	-\$71	-\$21
Texas	\$1,066	\$1,099	\$1,089	-\$33	-\$23
US	\$1,043	\$1,083	\$1,048	-\$40	-\$5

### Employment by Industry (1st Quarter 2016, Percent Change)

Industry	Employment	% of total	% Change	
			Quarter	Year
Natural resources and mining	7,170	5.9%	-13.1%	-26.8%
Construction	6,688	5.5%	-7.3%	-5.2%
Manufacturing	8,998	7.4%	1.3%	0.8%
Trade, transportation and utilities	24,483	20.2%	-3.0%	-0.3%
Information	1,511	1.2%	-9.7%	-6.3%
Financial activities	5,663	4.7%	1.7%	-6.3%
Professional and business services	7,702	6.4%	-1.6%	-3.4%
Education and health services	35,146	29.0%	-0.4%	1.8%
Leisure and hospitality	12,275	10.1%	-0.9%	1.4%
Other services	3,512	2.9%	-1.0%	1.2%
Public administration	7,879	6.5%	0.3%	2.4%
<b>Total</b>	<b>121,027</b>	<b>100.0%</b>	<b>-2.2%</b>	<b>-2.2%</b>

### Employment by Industry (1st Quarter 2016)

